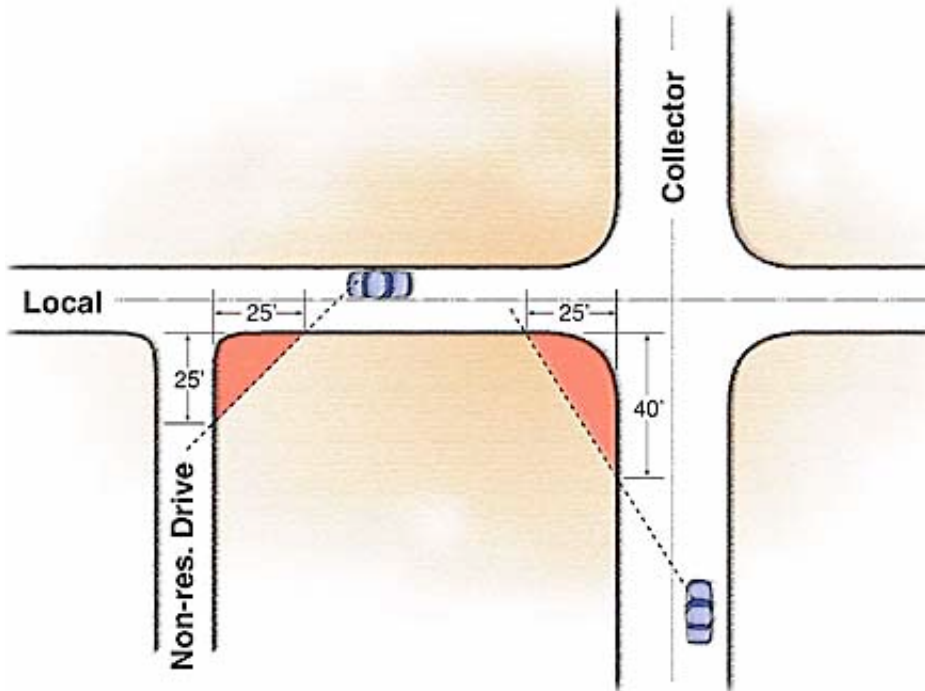


Vision Clearance Triangle

No fence, wall, hedge, shrub, structure or other obstruction to view which is over 42 inches in height shall be erected, placed or maintained within a triangle formed by the property line immediately adjacent to a street, road, railroad right-of-way, or non-residential drives as illustrated in the figure below.



Distance of Vision Clearance Triangle

Street/Road Classification	Required Distance from Intersection
Non-residential drive	25'
Local	25'
Collector	40'
Arterial	55'
Railroad right-of-way	55'